



1 BARS

Traditional Prague nightlife revolves around top-notch beer and smoky pubs, such as **Baracnicka rhycha in Mala Strana** or **Kozicka in Stare Mesto** but you'll have no problem finding your own favourites as you meander about. The local beer is the main draw, thanks to famous names such as **Pilsner Urquell, Staropramen and Budvar**. Beer aside, many bars offer nightly live music and the jazz scene is thriving.



Astronomical Clock, Town Hall.

PRAGUE



A view of Prague's bridges

WE HAVE
BUNCHES OF
CHEAP FLIGHTS
AND HOTELS ON
arrowtours.ie

2 HISTORY

Prague remained blessedly unharmed during both World Wars and the Velvet Revolution of 1989 passed without a single shot being fired. This results in a city steeped in history with a stunning showpiece centre, winding medieval lanes edged with Gothic, baroque and art nouveau facades.



Staromestske namesti

3 SIGHTSEE

Staromestske namesti is still Prague's most important and jaw-dropping square, a vast cobbled expanse flanked by brightly painted baroque houses. Centerpiece is the **Town Hall**, home to the extraordinary **Astronomical Clock** and crowds gather hourly to watch the figures shuffle out portraying various saints as well as death, vanity, history and greed. Also visit **Prague Castle, Charles Bridge and Wenceslas Square**.



Charles' Bridge

4 QUARTERS

The city is conveniently segmented into various quarters: **Stare Mesto (Old Town)** is approached from Charles Bridge and leads along the Royal Route (once the coronation path followed by Bohemian kings) between the city gates and Prague Castle. It also holds the Town Square and the eerily blackened towers of the Church of Our Lady before Tyn. **Josefov** is the Jewish Quarter which holds many poignant tributes to the victims of Nazi genocide. **Nové Mesto (New Town)** was made famous by the massive protests in Wenceslas Square which brought down the Soviet-backed socialist government.



5 MUSIC

Music is the lifeblood of the city and you can barely walk a step without hearing classical strains wafting out of a church, concert hall or home. Prague's classical music venues are among the most beautiful buildings in the city and include the **Municipal House, the Rudolfinum, the National Theatre and State Opera**. Impress your partner with a look at your cultural side!



International Music Festival

6 FOOD

Czech cuisine is known more for its savour and heartiness than for subtlety or variety. Smoked meats, sauerkraut and dumplings are tasty, cheap and excellent at soaking a bucket of beer. That said, Prague has improved out of all recognition in recent years and are now numerous top-notch restaurants serve international cuisine.



FREE ADDED VALUE

Receive a fabulous 72 page guidebook of Prague compliments of Arrow Tours giving a comprehensive description of the city and all the interesting places to visit. Worth €10, this booklet has detailed maps, lively descriptions, a user-friendly design and full colour photographs – be your own expert for the duration of your stay!

The above-mentioned offers are supplied to clients on a request basis purchasing a full package tour (flights and hotel) booked and paid for at least 14 days prior to travel. Full conditions on arrowtours.ie



FREE

Also, very handy pocket map of the city, with full street index, important buildings, railway and metro stations and parks highlighted. This map is also cross-referenced to the free guide book above.

Save €€€'s off the admission prices to the top attractions, museums, and galleries with this fantastic '2 for the price of 1' discount vouchers provided specially to Arrow Tours clients.



Your next step...

- Simply see your local travel agent and ask for an Arrow citybreak,
- Click on www.arrowtours.ie
- Or call us on **041 983 1177**.



ST. GEORGE HOTEL

★★★★

Tyrsova 2, Prague 2.

Our most popular hotel in Prague. The St. George Hotel is located within walking distance of Wenceslas Square and the city's main attractions. The hotel's facilities include a fitness centre (fee to use) with whirlpool and spa and has the added luxury of air conditioning.



PRAGUE CENTRE HOTEL ★★★★★

Legerova 32, Prague 2

This hotel is in the newer part of the city and is a ten minute walk from Wenceslas Square and about 300m from the metro station IP Pavlova. The hotel was renovated in Spring 2002 and while the foyer is quite small, the rooms are big, bright and modern. It also has a sauna, whirlpool and massage facility



PRAGUE CENTRE PLAZA

★★★★

Fugnerovo Namesti 1, Prague 2

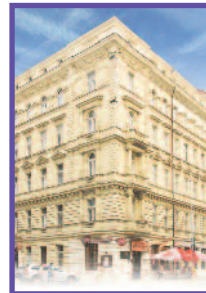
This property is just around the corner from its sister hotel Prague Centre in an elegant historic building with views over a quaint square. The rooms are modern, bright and tastefully if simply finished. Your hotel offers you an internet corner, sauna, whirlpool, massage and Salt Cave Spa.

HOTEL ATOS

★★★★

Meinicka 13, Prague 5

This hotel is located on the west, or left bank of the river Vltava in the area known as Mala Strana and very close to the river itself. Opened in 2002, the building is set in a classical style while inside the rooms are bright and simply furnished. The hotel shares the building with a restaurant that specialises in Greek and Italian cuisine.



56

67

95

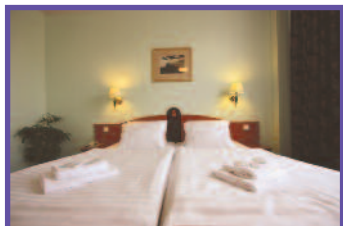
67



JURYS INN PRAGUE ★★★★★

Sokolovska 11, Prague 1

This very popular Irish brand has branched abroad and the hotel is in the New Town, about a 10-minute walk from the Old Town and right beside the metro station Florenc. The property is purpose-built rather than a converted building and the rooms are generous in size, modern and comfortable. Sweat it out in their gym then enjoy a cool beer in the bar before dining in-house.



HOTEL CENTRAL ★★★★★

Rybna 8, Prague 1

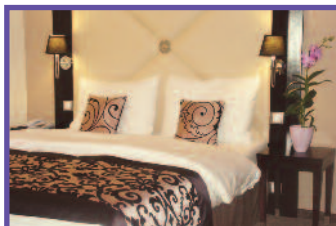
This place got its name because it is – bang in the middle of the Old Town and also close to Wenceslas Square. The hotel dates back to 1931 but the rooms and décor while simple in style are thoroughly up to date. Take refuge from the bustle outside in the Lobby Bar or enjoy a meal in restaurant Cascade.



RAMADA GRAND SYMPHONY ★★★★★

Vaclavske Namesti 41, Prague 1

The Ramada has one of the most prestigious addresses in Prague – right on Wenceslas Square itself. The rooms are tastefully furnished to a high standard and in the vicinity of the hotel you can choose from a range of restaurants, bars and cafés. There is an arrangement with an adjoining fitness centre that has a sauna, whirlpool, gym and solarium.



DESIGN ELEPHANT HOTEL

★★★★★

Na Florenci 29, Prague 1

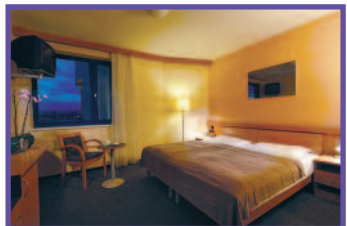
This hotel is in the New Town part of the city, about a 10 minute walk from the Old Town, 3 minutes from the metros Namesti Republiky & Florenc and about 15 minutes from Wenceslas Square. The front and façade of the hotel is Baroque and once past the door the design throughout the hotel is very modern in style. The hotel is part of a complex that offers a gym, wellness centre, jacuzzi, massage, bistro, sushi bar, casino and wine shop.

214

51

100

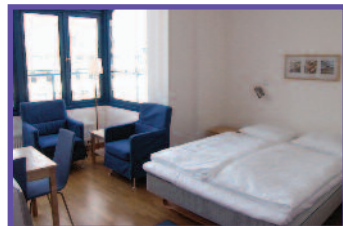
100



ARCHIBALD HOTEL ★★★★★

Zitna 33, Prague 1

The Archibald only opened in September 2005 and is in Nove Mesto, the New Town, about 400m from Wenceslas Square and close to the Old Town. The building is very new and both the rooms and public areas are finished in a bright modern style.



JULIS APART HOTEL ★★★★★

Vaclavske Namesti 22/28, Prague 1

The Julis is located in the heart of the city, right on Wenceslas Square in what is known as the 'Golden Crossroads' because of its proximity to shops and offices. While maintaining the original Art Nouveau style of the building, all rooms have been renovated with modern facilities. The breakfast room overlooks a peaceful Franciscan garden behind the building and the hotel has a gym, sauna and rooms have a kitchenette.



CLARION CITY ★★★★★

Tylovo Namesti 15, Prague 2

The 4 star Clarion is in the Nove Mesto, the New Town, about 100m from the metro station IP Pavlova and about a 10 minute walk from Wenceslas Square. The hotel is part of the worldwide Clarion chain and both the public areas and rooms are fitted in a modern, simple style. Their restaurant Benada food ranges from simple snacks to high-class gourmet menus, accompanied by selected international and local wines.

80

72

64

CORINTHIA TOWERS HOTEL

★★★★★

Kongresova 1, Prague 4

This five star gem is set in the south of the city, about 3km from the city centre, and 200m from the metro station Vysehrad which is only 2 stops from Wenceslas Square. All the rooms and suites are superbly appointed and enjoy unmatched views of the city. You can choose your dining experience from 4 themed restaurants, your drinks from 2 bars and a coffee shop. In addition the Towers can offer you a penthouse health and fitness club, swimming pool, sauna, solarium, squash court, 10-pin bowling lanes, hairdressing & beauty salons and a casino.



HOTELS

- 1 St. George / Prague Centre
- 2 Atos / Residence Mala Strana
- 3 Clarion City / Tyl
- 4 Central City
- 5 Ramada Grand Symphony / Elysee
- 6 Design Elephant
- 7 Archibald
- 8 Julis
- 9 Jurys Inn Prague
- 10 Corinthia Towers / Panorama

- 11 Machova
- 12 Meteor Plaza
- 13 Tulip Inn Prague
- 14 Terminus
- 15 Amadeus
- 16 Roma
- 17 Tosca
- 18 Tchaikovsky
- 19 Anna
- 20 Diplomat
- 21 Bila Labut

Places of Interest

- A Wenceslas Square
- B Old Town
- C New Town

We've not gone anywhere in over 50 years just so that you CAN!!!

Pricing details and hotel symbols key on page 2.