

LONDON

UNDERGROUND



Routemaster bus



Buckingham Palace

1 SIGHTS

Westminster Abbey, Big Ben, Houses of Parliament, Buckingham Palace, Pall Mall, Trafalgar Square, The London Dungeon, Madame Tussaud's and the London Planetarium, Tower of London and the Crown Jewels, The National Gallery, St. Paul's Cathedral, Tower Bridge for starters!

calling!

2 WALKING TOURS

These are informative, entertaining, led by experienced guides, last a few hours and generally located in central London. The list is enormous and themes include Shakespeare's London, Mayfair, Victorian London, Legal London, Apparitions Alleyways & Ale, the Beatles Magical Mystery Tour. However if the stalking, disembowelment and throat gouging of drink-sodden prostitutes in East-End Victorian London is up your dark alley then look no further than the Jack-the-Ripper nighttime walking tours. Bring your own toilet roll.



3 SHOP!

Oxford Street for the mainstream stuff, **Knightsbridge** for the designer gear and then your street markets include **Camden, Portobello, Greenwich, Spitalfields** and **Brick Lane** for whatever few pence you have left.

ARROW TOURS

WE HAVE BUNCHES OF CHEAP FLIGHTS AND HOTELS ON arrowtours.ie



Big Ben & the Houses of Parliament

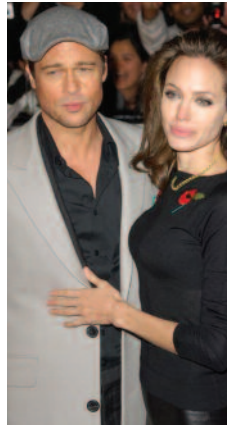
4 THEATRE



The West End is world famous for its **Theatreland**. Have us book a show for you!

5 WEST END PREMIERES

If celebrities just love to be in your company then head down to Leicester Square for a fan-screaming, red-carpet, paparazzi-flash, shoulder rubbing with the Hollywood movie stars. You never know..... a famous one might just get to meet you! Check www.premiere.com for dates.



6 AFTERNOON TEA!

Wanna pamper yourself with something different? Impress the socks off your partner with a quaint Afternoon Tea at a posh hotel. Try **Le Meridien Hotel** in Piccadilly.



FREE ADDED VALUE WITH FLIGHTS AND HOTEL

GUIDE BOOK & MAP



This useful guide lists the events and sightseeing information that every tourist would wish to know, such as places of interest, river trips, guided walks, art galleries, museums, theatres, music and trade exhibitions. It will tell you how to get there as well as providing a detailed map of central London. Supplied free.

The above-mentioned offers are supplied to clients on a request basis purchasing a full package tour booked and paid for at least 14 days prior to travel. Full conditions on arrowtours.ie

7 SPORT

Whether it's at Arsenal, Chelsea, Fulham, Tottenham or West Ham, **see the team you HATE get hammered in London.**



We have a range of flights and hotels to help you book your perfect Arrow Tours citybreak

Your next step... simply see your local travel agent and ask for an Arrow citybreak, click on www.arrowtours.ie or call us on **041 983 1177**.



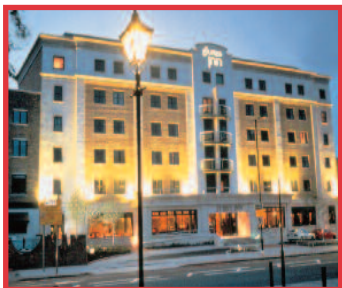


ROYAL NATIONAL ★★

Bedford Way, WC1H

Central London's largest hotel, the Royal National is ideally located for visiting the capital with the British Museum, Covent Garden, Oxford Street and Theatreland all close by. Guests can sample authentic curry at the Indian restaurant, stone-baked pizzas at London Coffee, guest ales in the London Pub beer garden, dim sum at the Chinese restaurant, and cocktails at the South Side Bar. There is an ATM, bureau de change and shops in the foyer and nearby are the health club with pool (with concessionary rates for guests) and a bowling alley.

➔ Russell Square



JURYS INN LONDON ★★★

Pentonville Road, N1

This home-from-home brand is enormously popular with the Irish and Jurys Inn Islington is located close to Emirates Stadium – base for The Arsenal Football Club, another Irish favourite – and with easy access to King's Cross, St. Pancras and Euston stations. The rooms have air conditioning, multi-channel flat screen TV, high speed internet access and some are available for guests with mobility needs. Try the Inn Pub or Arches Restaurant with a variety of menus served at reasonable prices or the more energetic can avail of the Sports Club nearby, at an additional charge.

➔ Angel



IMPERIAL HOTEL ★★★

Russell Square, WC1B

Overlooking Russell Square Gardens, London's largest public square, the Imperial Hotel is ideally located close to the British Museum, Covent Garden, Oxford Street, and a short bus ride away from the London Eye. There is the Night & Day Pub-Bar (open until 1.00a.m. for guests), the Emperor Bar, Casino, Atrium Coffee-Bar with internet hot spot, hair salon, newsagent, bank, and Chinese herbalist. Some of the rooms have breathtaking views of this exciting city.

➔ Russell Square



PRESIDENT HOTEL ★★★

Russell Square, WC1N

The President is a modern hotel, offering traditional values and service and is within walking distance of the British Museum, Covent Garden, Oxford Street and Theatreland. Its facilities include an intimate bar and carvery restaurant, the tranquil Atrium lounge and peaceful Atrium Coffee-Bar. Guests staying in the President can use the facilities of the adjacent Imperial, including the fun and lively Night & Day Pub-Bar. The hotels share a shopping arcade with hair salon, bank, Chinese herbalist and newsagents.

➔ Russell Square



ST. GILES ★★★

Bedford Avenue, WC1

Located in London's famous West End, this hotel is a shopper's paradise as it is close to the junction of Tottenham Court Road and Oxford Street. Facilities include Il Grasso Italian restaurant, Chikara Chinese restaurant, Hakuba Japanese Restaurant and the Lazy Dog Bar. Guests also have access to a 25m heated indoor pool, gym and sports equipment for a small charge – these may close on certain dates.

➔ Tottenham Court Road



STRAND PALACE ★★★

Strand, WC2R.

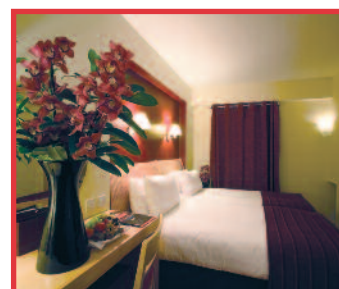
The Strand Palace is in the heart of the West End close to Covent Garden and Theatreland in an Art Deco showpiece that has been carefully modernized. The rooms have satellite TV, pay TV, Wi-Fi access and you can dine whenever you wish with 24-hour room service. For sightseers and theatre-goers try Johnston's Brasserie; Play some pool, watch a match and have a pint of draught beer in Hops, the traditional English pub, or visit the Strand Carvery for succulent roast meats.

➔ Covent Garden



We have been in business since 1958, we are licensed by the Commission for Aviation Regulation and we are fully bonded (which means your booking is safe with us).

Book your Arrow Tours citybreak with confidence!!



KENSINGTON CLOSE ★★★★★

Wright's Lane, W8

Situated off Kensington High Street, the Kensington Close is very near to Earl's Court, Olympia exhibition centres and the prestigious shops of High Street Kensington. The Emotion Leisure is a superb luxury health and fitness club, available to guests of the hotel for a charge per day and includes an 18 meters heated swimming pool, Jacuzzi, Steam room, beauty treatments and a fully equipped gym. The hotel has several restaurants and bars.

➔ Kensington High St.



COPTHORNE TARA ★★★★★

Scarsdale Place, Wright's Lane, W8

The award winning Copthorne Tara Hotel has an enviable reputation for its high standards of comfort and impeccable service. Situated in a quiet corner of fashionable Kensington, the hotel is within easy reach of the shops and restaurants of Knightsbridge and Kensington High Street. The hotel's Bugis Street Restaurant provides guests with tantalising Singaporean, Malaysian and Cantonese cuisine sure to please the most discerning palette.

➔ Kensington High Street



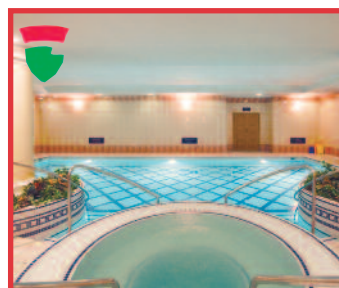
THE KENSINGTON HOTEL
(FORMERLY JURYS KENSINGTON)

THE BLOOMSBURY HOTEL
(FORMERLY JURYS GREAT RUSSELL STREET)

THE MARYLEBONE HOTEL
(FORMERLY JURYS CLIFTON FORD)



OUR 5-STAR
LONDON HILTON
ON PARK LANE



THISTLE CITY BARBICAN ★★★★★

Central Street, EC1

Clients should note that this hotel is in the City of London which is the financial and banking district rather than the City of Westminster which holds the shops, theatres, museums etc and where tourists generally stay. The Otium Health & Leisure Club has swimming pool, gym, sauna, steam room and beauty treatments and after all of this why not indulge yourself at the award-winning 120 Central Brasserie or the Co.motion Brewshop Café.

➔ Barbican



THISTLE MARBLE ARCH ★★★★★

36 Bryanston Street, W1

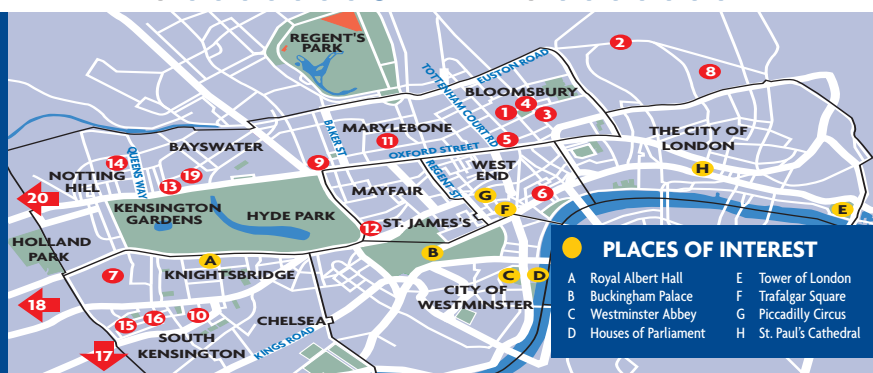
Overlooking Oxford Street, one of the world's premier shopping streets, and in the centre of the West End with its theatre and lively nightlife, the hotel's location has always secured its popularity with Irish visitors to London. The Carvery, a beautiful 1930's themed London restaurant, offers tantalising cuisine in a choice of Carvery buffet and table d'hôte menu styles. Glenn Miller's Bar, aptly named after the American jazz musician is a unique venue with a collection of memorabilia and provides an ideal place in which to relax and enjoy a drink or a light meal or The Lounge, conveniently located in the main lobby, is perfect for a quick bite to eat or to take time out for afternoon tea.

➔ Marble Arch



HOTELS

- 1 Royal National
- 2 Jurys Inn Islington
- 3 Imperial
- 4 President
- 5 St. Giles & The Bloomsbury Hotel
- 6 Strand Palace
- 7 Kensington Close & Copthorne Tara
- 8 Barbican
- 9 Thistle Marble Arch
- 10 The Kensington Hotel
- 11 The Marylebone Hotel
- 12 London Hilton on Park Lane
- 13 Thistle Lancaster Gate
- 14 Phoenix
- 15 The Burns Hotel
- 16 Harrington Hall & Millennium Baileys
- 17 Jurys Inn Chelsea
- 18 Hilton London Olympia
- 19 Corus on Hyde Park
- 20 Hilton London Kensington



Pricing details and hotel symbols key on page 2.